



# Friends of Plum & Pilot Islands, Inc.

*Where History and Nature Meet at the Door!*

Founded in 2007

## Forum: Spring 2023

### In this issue...

#### Feature Articles

- ✦ Refuge Manager's Corner
- ✦ Plum Island Front Range
- ✦ Happenings Past and Present
- ✦ Annual FOPPI Meeting and Picnic

#### Events

- ✦ Photography Workshop
- ✦ Plant Sale
- ✦ Around the County
- ✦ *The Shoreline* Charters

#### Book Reviews

#### Supporting FOPPI

- ✦ Float the Boat, Door County Candle Co., Meet a Member
- ✦ President's Volunteer Service Award

#### Membership Form

FOPPI *Forum* back issues can be found at the Washington Island Archives, WI Marine Historical Society, WI Maritime Museum, Egg Harbor Public Library, Sturgeon Bay Public Library, and the Wisconsin Historical Society Archives.

Hello, Friends,

It is with a huge smile that I look back 15 years ago when my cousin Karen Tews and I witnessed the history-making transfer ceremony of Plum and Pilot Islands to the U.S. Fish & Wildlife Service. (See photos on page 7.) I was seated next to then Secretary of State Douglas LaFollette, a bit spellbound in his presence. Little did we know how important this date would be and the trajectory we'd be on for the next 15 years (and beyond). It's been quite the journey, and I've met the most wonderful people along the way. I am so proud of the work we have done to support our mission and look forward to all the opportunities the next 15 years has in store for us!

We are excited to introduce our **NEW** reservation system for booking a relaxing cruise aboard FOPPI's boat, *M/V The Shoreline* ([www.plumandpilot.org/the-shoreline](http://www.plumandpilot.org/the-shoreline)). This year, we've added some opportunities for you to see the Plum, Pilot, Pottawatomie, St. Martin, and Poverty lights; learn about the shipwrecks in the area; and travel out to Fayette State Park! We are eager to share our love of these lights and stories of the area with you—book your ultimate cruise soon! Proceeds from your cruise ticket go toward the cost of restoring and preserving the historic structures on the islands.

We have various volunteer opportunities for you this year: crew on *The Shoreline*, be a volunteer and/or interpretive guide on Plum Island, assist in guiding guests at the Ridges Festival of Nature and the Door County Maritime Museum's Lighthouse Festival, and work to keep Plum Island clean and safe for visitors. Check our website for dates and times ([www.plumandpilot.org/eventswork-days](http://www.plumandpilot.org/eventswork-days)) or send an email to [friendsofplumandpilot@gmail.com](mailto:friendsofplumandpilot@gmail.com) with any questions.

In addition to our new reservation system and variety of volunteer opportunities, we are offering a photography workshop with famed Door County photographer, David Heilman. You can sign up to attend the spring, fall, or both workshops in our store ([www.plumandpilot.org/store/p57/photography-workshop](http://www.plumandpilot.org/store/p57/photography-workshop)). The cost is \$35, which pays for your transportation from Washington Island and, like the cruise, supports our historic preservation projects.

We hope to see you soon!

—Mary Beth

## Refuge Manager's Corner

*Spring work is going on with joyful enthusiasm.*

*—John Muir*

Spring has arrived at Green Bay and Gravel Island National Wildlife Refuges, and we're looking forward to what the 2023 season has in store! As we continue to make plans and confirm details for the field season, it's clear that our work can't start soon enough.

As March came to a close and April began, I was hard at work with FOPPI to host orientations and trainings for those who will volunteer at our refuges this year. Our orientations focused on reviewing processes and policies with many returning volunteers, but also on training and introducing our volunteer opportunities to those new to the work we do together on the islands. Be sure to attend one of our orientations if you're interested in volunteering—sign up links are available on the FOPPI website.

As we work together to bring our volunteer process into alignment with policy and best practices, know that all volunteers for the refuge will need to attend an orientation each year. We will also provide virtual and in-person training for each position to help get everyone up to speed.

With orientation underway, I have been recruiting volunteers this spring to fill a variety of positions. We have opportunities to assist with grounds maintenance (mowing, weeding, clearing trails) at the Plum Island unit, construction, historic preservation and building maintenance, biological surveys of plants and wildlife, greeting and leading the public in natural and cultural resources tours, and deckhand duties aboard our *M/V Phebe* for field operations.

It won't be long before we're out to the islands to begin work for our field season! Staff and volunteers for the refuge are already gearing up for our first projects and programs, so be sure to follow along on the FOPPI and Green Bay National Wildlife Refuge websites.

The Plum Island and Detroit Island units are open to the public from the Friday before Memorial Day through Labor Day every year, and we have many projects planned. Memorial Day weekend we have the Ridges Sanctuary's Festival of Nature, bringing visitors aboard FOPPI's *M/V The Shoreline* to be led by refuge staff and volunteers on tours

featuring the natural resources that make the refuge a vital piece of federally protected lands. The Door County Maritime Museum's annual spring and fall lighthouse festivals return to the refuge as well, with tours offered June 9-11 to visit the Plum Island Unit and sailings near other lighthouse sites of the refuge again aboard FOPPI's *M/V The Shoreline*. These public events are exciting and meaningful ways to learn more about the cultural, historical, and natural resources of the Green Bay and Gravel Island National Wildlife Refuges.

Projects set for this year include a lead and asbestos testing at the refuge. Our aim is to determine precisely what hazards to health exist in the buildings before we move ahead in the coming years with some of our most significant historic preservation work on the refuge. With that survey in hand, we will have the best information to assist contractors and our volunteers in maintaining the safest work environments possible. Not only that, but the supplied report will provide accurate cost estimates for removing any confirmed asbestos-containing materials, lead impacted areas, and any other hazardous materials.

We will also be conducting required annual testing of the well at the Plum Island Unit for contaminants, this year adding a vital PFAS test. PFAS, or "forever chemicals," are man-made chemicals that have been used widely in industry and consumer products worldwide since the 1940s. These chemicals, which have been used in products such as nonstick cookware, water-repellent clothing, and other products that resist grease, water, and oil can pose a health risk to humans and animals. By collecting data about the presence of PFAS at the refuge, we'll be able to contribute to important research underway to better understand the impacts these chemicals have on humans and animals across the globe.

Beyond these tests, we are also partnering with FOPPI this year to keep working on the exterior of the crew's quarters building at Plum Island. A project is planned to paint the lattice surrounding the building to bring the exterior even closer to the intended period of interpretation. We're also collaborating to move forward with replacement of the boat bay overhead doors at the boathouse on Plum Island, to begin scoping projects for maintenance and rehabilitation of the boathouse roof, interior, and exterior, and to dive deeper into scoping preservation projects for the lighthouse at the Pilot Island Unit.

## Refuge Manager's Corner

Refuge staff are also planning invasive species monitoring and treatment at the Plum and Detroit Island units in collaboration with the Door County Soil and Water Conservation District. Work will include targeted removal and control of honeysuckle species, Japanese barberry, and phragmites. This is another great example of how the USFWS applies our mission to work with others to conserve and protect fish, wildlife, plants, and their habitats for the benefit of future generations!

Lastly, we are very close to finalizing the fundraising agreement with FOPPI for the rear range light's repainting project. This is exciting news for policy nerds, but even more for all of us as we get closer to showing off our partnership with FOPPI and the ability to complete work on

that iconic and most-viewed historic resource of the refuge. There's another busy summer ahead!

Staff of the Horicon National Wildlife Refuge and Leopold Wetland Management District Complex are grateful for your support, your willingness to share your skills in volunteer work, and dedication to sharing with others the importance of conserving and protecting the plants, wildlife, fish, and their habitats at Green Bay National Wildlife Refuge. It's through the protections of your National Wildlife Refuges that we're able to continue sharing together the stories of the people who called the islands home.

—Joel Vos, Refuge Manager, Green Bay and Gravel Island National Wildlife Refuges

---

*There is a delight in the hardy life of the open. There are no words that can tell the hidden spirit of the wilderness that can reveal its mystery, its melancholy, and its charm. The nation behaves well if it treats the natural resources as assets which it must turn over to the next generation increased and not impaired in value.*

—Theodore Roosevelt

### Happy 120th birthday to the National Wildlife Refuge System!

For more than a century, these protected areas have been preserving wildlife habitats, providing endless opportunities to learn about nature, and offering millions of acres in natural areas for outdoor recreation.

It has been 120 years since President Theodore Roosevelt established the first national wildlife refuge on Pelican Island, located off the coast of Florida, on March 14, 1903. Since then, the National Wildlife Refuge System has grown to comprise a network of conserved lands across the country, ranging from coastal wetlands to grasslands and from forests to arctic tundra. The more than 560 refuges in the system have helped protect endangered species and restore ecosystems that were on the brink of destruction. (Paraphrased from [refugeassociation.org](http://refugeassociation.org) and [fws.gov](http://fws.gov).)

To learn more about the National Wildlife Refuge System, Pelican Island and other refuges, and the conservation legacy of Theodore Roosevelt, visit these websites:

[www.fws.gov/story/happy-birthday-refuge-system](http://www.fws.gov/story/happy-birthday-refuge-system)

[www.fws.gov/refuge/pelican-island](http://www.fws.gov/refuge/pelican-island)

[www.fws.gov/visit-us/refuges](http://www.fws.gov/visit-us/refuges)

[earthobservatory.nasa.gov/images/147851/americas-first-national-wildlife-refuge](http://earthobservatory.nasa.gov/images/147851/americas-first-national-wildlife-refuge)

[www.doi.gov/blog/conservation-legacy-theodore-roosevelt](http://www.doi.gov/blog/conservation-legacy-theodore-roosevelt)

## Plum Island Front Range by Eric Bonow

Navigation in the Death's Door passage has always been a treacherous endeavor. Early mariners, with only the light on Pilot Island and a couple of buoys to guide them had little to rely on for accurate position determination. By the summer of 1889, commercial mariners were seeking solutions to this problem. A February 1, 1890 article in the *Chicago Daily Tribune* spoke out plainly:

***For Range Lights at Death's Door Passage—The plan of Capt. Nicholson for range lights and a fog signal at Death's Door entrance to Green Bay, published in The Tribune some time ago, has been laid before the Lighthouse Board at Washington, and Capt. Clarke, in charge of this lighthouse district, has been converted to the project. "I confidently believe," said Capt. Nicholson, "that if the range lights are placed as in the map now before the Lighthouse Board the terrors of Death's Door passage will be overcome. A better trap to catch vessels could not be planned that the entrance as it is now, and the number of wrecks occurring there every season demonstrates how difficult it is for boats to keep out of it in foggy weather. But it is bad at all times, and vessel interests demand that they be given the protection." Chicago vessel men have joined heartily in aid of Capt. Nicholson's plan, and their united influence is being added to secure the lights. Capt. Nicholson has been commander of the Peshtigo fleet, sailing through Death's Door passage twice a week for a quarter of a century.***

Newspapers as far removed from the Great Lakes as the *Rocky Mountain News* in Denver reported on August 26, 1890 of the request to Congress for the appropriation of funds. The 1890 Annual Report of the U.S. Lighthouse Service spelled it out in official terms:

***Porte des Morts Ranges, on Plum Island, entrance to Green Bay, Lake Michigan, Wisconsin—Range lights and a fog-signal on the south west side of Plum Island will be an invaluable addition to the aids to navigation in the Porte Des Morts Passage. The Board is of the opinion that they should be established on Plum Island, and has so recommended in its report of 7th January 1890. They can be built for \$21,000, and the Board renews its recommendation that an appropriation of that amount be made therefor.***

Petitioning Congress for money and receiving it are two different things. The initial request was made in 1890, but it was not until 1895 that the money was appropriated.

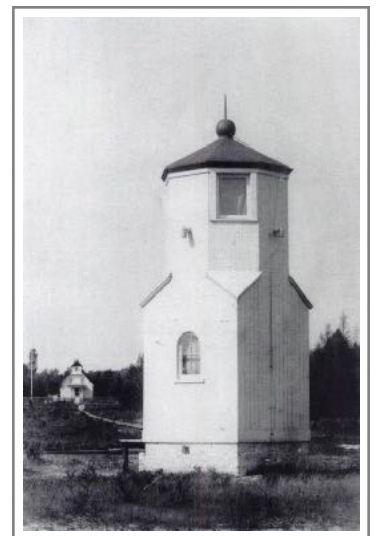
Finally in 1895-96, plans and specifications were drawn up and contracts let. Construction began in 1896, and, on August 22, *The Advocate* reported that the job superintendent had a crew of 30 men. Progress continued through the year, and by September the front range was complete. The Plum Island Marine Notes in the October 31 edition of *The Advocate* reported, "About forty men are still at work on the new range lights. The brick work is completed. The tower, which is built entirely of iron and steel, is about 70 feet in height and 60 feet from the light to the ground." The final report in *The Advocate* came in mid-December with the range lights complete, except for the installation of the lights. The last of the crew went home. A lot of work was completed in a relatively short period of time.

The Lighthouse Service tried to standardize designs as much as possible in a cost-saving measure. In our area, both Eagle Bluff Light and Chambers Island Light were built to the same plan, with minor differences in the shape of the tower. The same condition existed for front range lights. On the Great Lakes, Plum Island, Eagle Harbor, MI, Copper Harbor, MI (not pictured), Presque Isle, MI, and Baileys Harbor, WI, were all of a similar design. Only Baileys Harbor is still in use.

So how can Death's Door be robbed of its terrors by a couple of lights? The two lights, when kept in line by a mariner, give a single accurate line of position. Prior to the extensive use of electronic



Plum Island, WI, front range, 1935.  
Photo from the U.S. Coast Guard.

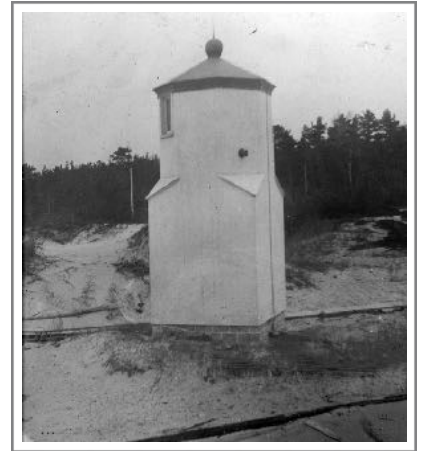


Baileys Harbor, WI, front range,  
1907.

## Plum Island Front Range by Eric Bonow



Eagle Harbor, MI, front range. Photo from the U.S. Lighthouse Society.

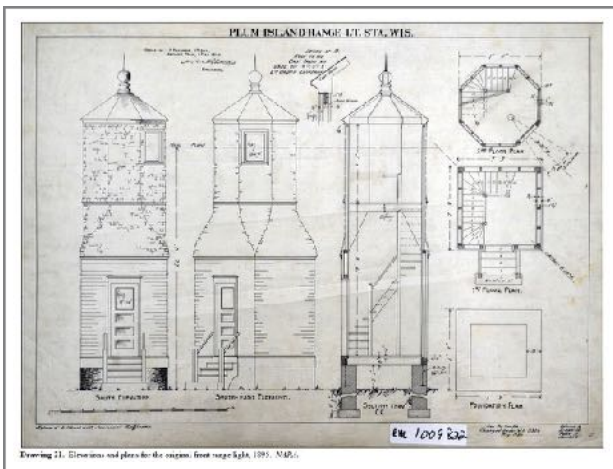


Presque Isle, MI, front range, 1904. Photo from U.S. Coast Guard.

In our example, there is a wind from the northeast, which is setting the ship to the southwest, and while the rate could be calculated, it is immaterial to the pilot. He sees that the ship is setting at a fairly rapid rate and takes quick and decisive action to correct it. In piloting, exact figures are not relevant. We use terms like “not too much,” “quite a bit,” or “an awful lot.” The example shows “quite a bit of set.” All of this information was determined in a traveled distance of about one-half mile, or in about three minutes of time. More importantly, it was gathered and the course corrected while the ship still had a lot of maneuvering room and was a safe distance from the shoal water. Were it not for the shoal water off the tip of the peninsula, the necessity of the range lights would be lessened considerably. (As an aside, in a future article, we will explore why Waverly Shoal was named.)

Another feature of ranges is that they are as useful whether navigating in daylight or darkness. At night, the two lights are easily seen. The front light is directional in that it is not visible all around the horizon. For example, the structure is visible from Northport, but the light is not. Therefore, at night, if one is looking for the range from out in the lake, the front light becomes visible when the ship is getting close to the range line. During the day, the structure itself is used as a “daymark.” The structure was white and the lantern was black, a visual contrast for daytime use. This mirrored the color scheme of the rear light. During the day, the two black lanterns were kept in line.

By 1964, the original front range light apparently required too much maintenance and was replaced with the steel skeletal tower. Because the structure is small and may blend visually into the background, daymarks were installed. The current marks are highly visible and have a white stripe on



Plum Island front range light drawing.

equipment prevalent today, having that information was invaluable to a ship's pilot. A range line is a quick, accurate, and easy way to avoid the shallow water in the Death's Door passage. By keeping the two lights exactly in line, the pilot could not only know that the ship was in good water but also ascertain set and drift. Ignoring set and drift can ruin a mariner's day. Set is the direction that a vessel is moving off the intended course due (usually) to wind or current, and drift is the rate of that set. While this article is not meant to be a primer on ship piloting, a basic explanation of the process that a pilot uses to keep the ship in good water shows the value of the system of lights. On the accompanying chart, the ship is shown in four different positions, and there is an explanation of each.

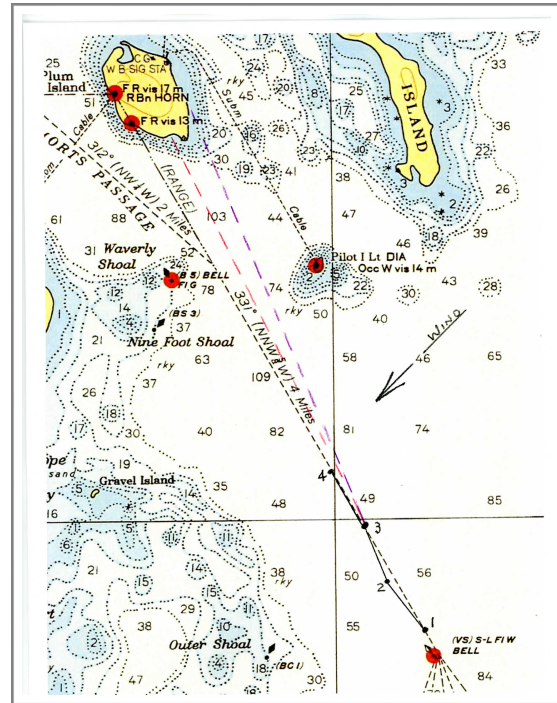
# Plum Island Front Range by Eric Bonow



The range lights with daymarks.



Plum Island front range light remnants, 2021.  
Photo by Eric Bonow.



**Position 1:** The ship is brought onto the range line and is heading on them. The ranges are said to be “closed.”

**Position 2:** By this time, the ship has set to the SW, and while still heading on the range, it is moving toward shallow water ahead. The pilot sees this happening and alters course to the right, and heads on the SE tip of Plum Island. In this instance, the ranges are said to be “opening.”

**Position 3:** At this time, the ship is back on the range line. The pilot has “closed them up.” If this heading were maintained, the pilot would be holding up too much, and the ship would “cross the range,” and be heading too close to Pilot Island. Therefore, he alters course slightly to the left, to about the middle of the island.

**Position 4:** We see by heading approximately 3° to the right of the range line, the ship remains “on the range,” and in good water. In this instance, the ship is said to be “holding up three degrees,” or steering three degrees into the wind to counteract the set. The course will have to be constantly adjusted to keep the ranges in line. Most likely as the ship gets closer to the turning point at Waverly Shoal, the course will be adjusted back to the left to keep the ranges in line. To use another extremely technical piloting phrase, “Don’t look where you’re headed, look where you’re going.” Put some thought into this, and the entire concept of range lines will become very clear.

a bright red background. When the two white lines become one, the ship is “on the range.” The original light was removed, but not all of it. A portion of the brick foundation is still evident. The drawing shows a 7’ 9” square foundation, which extends 5’ 6” below the ground. In September 2021, I took photos of the few bricks and leveled area of the old light. It would be very interesting to know if any more remnants exist.

## Chart of Porte Des Morts Passage

Solid lines show the ship’s track, or course, over the ground. Dashed lines show the ship’s heading.

## Happenings Past and Present



Wisconsin Secretary of State Douglas LaFollette speaking at the ceremony of the transfer of Plum and Pilot Islands to the U.S. Fish and Wildlife Service.

### Transfer Ceremony

On May 16, 2008, a ceremony was held on Washington Island to celebrate the transfer of Plum and Pilot Islands from the U.S. Coast Guard to the U.S. Fish and Wildlife Service.



Transfer ceremony plaque.



Some of the many people in attendance at the ceremony.



### Friends Workshop at the National Conservation Training Center

At the end of April 2023, FOPPI Board President, Mary Beth Volmer, and volunteer newsletter editor, Nancy Leisgang, traveled to the National Conservation Training Center in beautiful Shepherdstown, WV, to learn more about the partnership between Friends groups and the U.S. Fish and Wildlife Service. Representing USFWS from Wisconsin were Joel Vos, Manager of the Green Bay and Gravel Islands National Wildlife Refuges, and Dave Bolin, Deputy Project Leader of the Horicon NWR and Leopold WMD Complex. It was an inspirational learning and sharing experience with Friends members and USFWS staff.



The Potomac River.



Banner of Mardy Murie, "grandmother of the conservation movement."



Display for Pelican Island, FL, the first wildlife refuge in the country.



The Roosevelt Room, a gathering and brainstorming space.

*Wilderness itself is the basis of all our civilization. I wonder if we have enough reverence for life to concede to wilderness the right to live.*

*—Margaret (Mardy) Murie*

## Annual FOPPI Meeting and Picnic

Mark your calendar and plan to attend our annual membership meeting and picnic on Saturday, July 22, 2023. This is just one of the many benefits of being a FOPPI member! Transportation from Gills Rock and Washington Island to Plum Island is generously sponsored by Voight's Marine Service aboard their *M/V Yankee Clipper*. Guests are welcome.

Here's the outline for the day, weather permitting:\*

- **9:00am:** Depart Gills Rock on the *Yankee Clipper*. Please be at the dock at 8:45am.
- **9:30am:** Depart Washington Island on the *Yankee Clipper* at Detroit Harbor. Please be at dock at 9:20am.
- **10:00am:** Arrive at Plum Island.
- **10:30-11:15am:** Hold business meeting and recognize USFWS volunteers.
- **11:15am:** Picnic lunch provided. Please bring your own nonalcoholic beverages.
- **Noon-2:30pm:** Hike the Island, see the fabulous restoration work accomplished through our partnership with USFWS, shop our merchandise area, and talk with FOPPI Board members and USFWS personnel.
- **2:30pm:** Depart Plum for Washington Island.
- **3:00pm:** Arrive at Washington Island.
- **3:30pm:** Arrive at Gills Rock.

Attendees must pre-register to help the Committee plan food and transportation. Please register using SignUp Genius via our website [www.plumandpilot.org](http://www.plumandpilot.org) by Friday, July 7, to reserve your spot.

Space is limited to 60 passengers.

A big thanks to Charlie and Chris Voight, who are again transporting folks aboard their *M/V Yankee Clipper*. A lunch sponsored by FOPPI will be provided, please bring water or nonalcoholic beverages. A limited supply of lawn chairs are available on Plum—please consider bringing one along and donating it to Plum Island!

\*If weather is inclement, the meeting and lunch will be held in Washington Island's Community Center. Transportation from Detroit Harbor to the Community Center will be generously provided by Washington Island Cherry Train. Cross your fingers for a bluebird sky with plenty of sunshine Saturday, July 22!



*M/V Yankee Clipper* bringing guests to Plum Island for the 2022 annual meeting and picnic.  
Photo by Colleen Pilat.



It was a beautiful day for guests at the 2022 annual meeting and picnic.  
Photo by Tim Sweet.

Plum Island is a Leave No Trace site. Visit [www.fws.gov/project/leave-no-trace-principles](http://www.fws.gov/project/leave-no-trace-principles) to learn more!



Rear range light.  
Photo by Nancy Leisgang.

*I'm not opposed to a fancy meal, but I'll take a picnic any day...  
food and nature? Sign me up.*

*—Ryan Paevey*



## Events

### Plum Island Photography Workshop

Friends of Plum & Pilot Islands is excited to work with famed Door County photographer [Dave Heilman](#), who will share his craft with us during two photography workshops on Plum Island.

Throughout Dave's career he has explored photography as a part-time hobby, a full-time profession and now an outlet for his passion in fine art landscape and nature. His art has hung in galleries and juried art shows, and more recently his nature photography has been featured in national and regional publications.

Dave's tagline is "You are not photographing your subject, you are photographing how light falls upon your subject." Dave will guide you in meeting that light, whether you are a cellphone, SLR or time-honored film photographer. No experience is necessary, Plum Island will provide the inspiration.

**Dates:** Saturday, June 3 & Saturday, September 23

**Transportation:** Board *The Shoreline* at Detroit Harbor on Washington Island ([ferry schedule](#))

**Time:** *The Shoreline* departs at 9:00am and returns to Detroit Harbor at 12:00pm

**Cost:** \$35

**Cancellation Policy:** If you are unable to attend, we will consider your ticket cost a donation to the Friends of Plum & Pilot Islands.

**Inclement Weather Policy:** Occasionally a trip needs to be canceled due to weather or other unforeseen circumstances. If this situation arises, a FOPPI volunteer coordinator will contact you to determine if you would like your registration fee to be 1) applied to the next workshop held on September 23, 2023; 2) donated to FOPPI; or 3) refunded. Thanks for your understanding and support of FOPPI.

Proceeds from this workshop will go toward historic preservation of the maritime structures on Plum and Pilot Islands. Thank you for your support!

To purchase tickets, go to [www.plumandpilot.org/store/p57/photography-workshop](http://www.plumandpilot.org/store/p57/photography-workshop).



ROCKY RISE

Photo by Dave Heilman.

### SAVE THE DATE: FOPPI's Native Plant Sale

Saturday, August 19, 2023

10:00am - 2:00pm

FOPPI is excited to once again partner with Stone Silo Prairie Gardens in DePere, Wisconsin, to host a plant sale of native perennials and grasses.

Late summer/early fall is the perfect time for planting natives to beautify your backyard, provide food for our precious pollinators, and raise funds for FOPPI!

Stone Silo experts and FOPPI volunteers will be on hand to help you select the perfect native plants for your garden. Stone Silo's plants are grown on site and are well suited for our climate.

Save the date and plan to visit your FOPPI friends on the beautiful grounds of Stone Silo Prairie Gardens, 2325 Oak Ridge Circle, DePere, WI.



Photo by Patti Zarling.

## Events

### Door County Festival of Nature: Memorial Day Weekend.

Visit [www.doorcountyfestivalofnature.org/](http://www.doorcountyfestivalofnature.org/) to learn more about the events and outings coordinated by The Ridges Sanctuary in Baileys Harbor.



Baileys Harbor Range Light.

**Door County Lighthouse Festivals: June 9-11 (Spring) and Sept 29-Oct 1 (Fall).** These fundraising festival weekends include air, land-based, boat, and adventure tours that provide access to all 11 of the treasured lighthouses of Door County and 3 of our neighbors to the south. Go to [dcmm.org/homepage-featured/2023-door-county-lighthouse-festivals/](http://dcmm.org/homepage-featured/2023-door-county-lighthouse-festivals/) for more info and to purchase tickets.



**Annual FOPPI Meeting and Picnic: July 23, Plum Island.** See page 8 of this issue of the FOPPI *Forum* for a detailed schedule of this fun event for FOPPI members.

**Door County Classic & Wooden Boat Show: August 5-6, Sturgeon Bay.** Love old boats? Don't miss this fun annual event! Check out [dcmm.org/event/classic-wooden-boat-show/2023](http://dcmm.org/event/classic-wooden-boat-show/2023) to learn more.

**Death's Door BBQ: August 26, Washington Island.** Come to beautiful Washington Island for the 11th annual Death's Door BBQ at the Washington Island Airport. Free admission, arts & crafts, kids' activities, live music, food vendors, and of course BBQ! Visit [www.deathdoorbbq.com](http://www.deathdoorbbq.com) for more information.



The volunteer crew on the first weekend in May.  
Photo by Tyler McGrane.

### Make Your Own Event with Cruises Aboard *M/V The Shoreline*: Ongoing Shipshape for the Season!

Volunteers with Friends of Plum and Pilot Islands (FOPPI) spent the weekend of May 6-7, 2023, working to get the nonprofit organization's boat, *M/V The Shoreline*, in shipshape for the upcoming season. The crew did various painting projects, installed a new horn, and unveiled a new vinyl decal on the stern of the vessel.



Stiles Meredith and Marty Wickersheim painting *The Shoreline*.  
Photo by Tim Sweet.

FOPPI will be using *The Shoreline* to provide Death's Door lighthouse cruises, which include a stop on Plum Island and a close-up water view of remote Pilot Island. Numerous private tour options are available to Rock Island State Park, Fayette Historic State Park in Michigan, and cruises past the Poverty Island and St. Martin Island lighthouses. All profits generated from the trips will be put into the continued restoration and preservation of the historic maritime structures found on Plum and Pilot Islands.



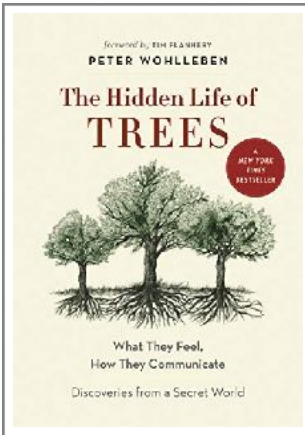
Captain Jim Robinson applying a new decal. Photo by Tim Sweet.

Cruises depart from Detroit Harbor on Washington Island, WI. The boat will be docked at Kap's Marina located within walking distance from the Washington Island ferry terminal. To learn more about scheduling a boat tour, visit [www.plumandpilot.org](http://www.plumandpilot.org).

*The purpose of life, after all, is to live it, to taste experience to the utmost, to reach out eagerly and without fear for newer and richer experiences.*

—Eleanor Roosevelt

## Book Reviews



### The Hidden Life of Trees: What They Feel, How They Communicate (Book 1 of 3) by Peter Wohlleben

Peter Wohlleben takes us on a magical journey deep into the forest where we learn about the community far beneath the ground. The reader learns that trees communicate with each other in the “woodwide web”; they send water and sugars to sick and injured trees, send out distress signals when threatened, and release tons of oxygen into the air. We learn that the reason we feel so much better after going for a walk in the forest is due to the vibrations that the trees send along this web. I have a much greater respect for trees after reading this book! —Mary Beth Volmer

*And into the forest I go to lose my mind and find my soul.*  
—John Muir



### Refuge: America's Wildest Places by Ian Shive

From the rugged reaches of Kenai, Alaska, to the vibrant coral reefs of the Palmyra Atoll, the National Wildlife Refuge System is dedicated to the preservation of America's natural habitats. Through the lens of Ian Shive, recipient of the Ansel Adams Award for Conservation Photography, *Refuge* will show you the greatest of these landscapes and wildlife, including the migratory birds of Midway Atoll, the golden prairies of the Rocky Flats, and more. Includes more than 300 of Shive's photographs as well as essays from top environmental and conservation organizations such as the National

Wildlife Refuge Association, Earth Island Institute, and the Arctic Refuge Defense Campaign, giving you the context that you need to appreciate these natural wonders. (Review courtesy of [amazon.com](https://www.amazon.com).)

*We need the tonic of wildness...At the same time that we are earnest to explore and learn all things, we require that all things be mysterious and unexplorable, that land and sea be indefinitely wild, unsurveyed and unfathomed by us because unfathomable. We can never have enough of nature.*

—Henry David Thoreau

To watch cool videos about the some of the amazing wildlife we share the planet with—and to read the latest stories about animals, plants, habitats, and more—check out the following websites:

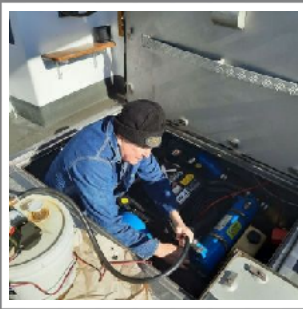
[www.fws.gov/story/wildlife-videos](https://www.fws.gov/story/wildlife-videos)

[www.fws.gov/story/watch-refuge-video](https://www.fws.gov/story/watch-refuge-video)

## Supporting FOPPI

### Springtime Checklist for *M/V The Shoreline*!

As FOPPI prepares to launch *M/V The Shoreline* for our second season of educational tours and charters, we invite you to invest in her operation and maintenance costs. FOPPI takes great pride in our meticulous maintenance schedule of the vessel.



Capt. Jim Robinson.

Changing the oil and filters at least three times per season is part of our routine maintenance. Two+ gallons of high-grade marine oil is used at a cost of \$120.00 per service. We have saved on labor costs with generous volunteers like Jim Robinson. Training is available for anyone who would like to learn!

Every spring the bottom of the hull receives a fresh coat of protective paint. We use one gallon of Antifouling Paint at a cost of \$299.99. The newer paint formulas available today are more environmentally friendly and also help prevent quagga mussels and algae from hitching a ride!



*M/V The Shoreline* in storage.

Many items large and small are needed for the routine maintenance of this vessel including oil filters, special marine cleaners, storage bins and rechargeable power tools. Help FOPPI keep our *M/V The Shoreline* ship shape this season with your donation to the Float the Boat fund today! Just visit [www.plumandpilot.org](http://www.plumandpilot.org) to donate.



### Plum Island d'Light Candle from Door County Candle Company

Door County Candle Company's candles are truly special, just like Plum Island! The Plum Island d'Light 16 oz. apothecary jar candle is crafted just for FOPPI in a beautiful light blend of vanilla and lavender.

All of Door County Candle Company's scented wax products are hand poured and handcrafted in small batches at their store in Door County. Their products are tested before market, and all of the fragrances are IFRA certified, meaning they are made with non-harmful chemicals and are safe to burn. Approximate burn time is 75 hours. Visit FOPPI's online store [www.plumandpilot.org/store](http://www.plumandpilot.org/store) to purchase.



FOPPI member and volunteer  
Kimberly Wells.

### Thank You, Kimberly!

I joined FOPPI after learning that my dad, a retired USCG Lieutenant Commander, started efforts in the late '90s to initiate the lead paint and fuel cleanup on Plum Island while he was serving as the captain of the Mobile Bay. My summer work schedule keeps me from participating hands-on as much as I like, but I do run (very slowly) for charity in the Nicolet Bay 5K each year and look forward to getting to spend more time on the islands in the future!

Friends,

**We Want to Hear from YOU!**

Do you remember the moment you felt compelled to support FOPPI's mission or to learn more about these unique islands? Do you have a special memory of a visit to the islands? Please share your story (of 250 words or less) for possible publication in the FOPPI *Forum*! Send to Nancy Leisgang at [friendsofplumandpilot@gmail.com](mailto:friendsofplumandpilot@gmail.com).

**Thank you!**

## Supporting FOPPI

### Friends of Plum & Pilot Islands welcomes these new members:

- ◆ Lori Dresen, Madison, Wisconsin
- ◆ Paulette Magnuson, Belvidere, Illinois
- ◆ Debra Owens, Deer Park, Illinois
- ◆ Sheila Thomson, Madison, Wisconsin

**Thank you for your support!**

Follow us on social media! Download our audio tours at [www.plumandpilot.org/audio-tour](http://www.plumandpilot.org/audio-tour).



Plum Island, spring 2022.

Friends of Plum & Pilot Islands, Inc. (FOPPI) was established in 2007 to preserve the unique island ecosystems and foster partnerships to preserve their heritage for future generations.

Your membership due and charitable gifts help to restore and preserve the historical maritime structures on these island and support education in the areas of conservation, natural history, and environmental protection.

Members who receive our quarterly newsletter, *FOPPI Forum*, are invited to attend the annual meeting and to join us seasonal cleanup, trail maintenance, invasive species removal, and light repair work.

Whatever your interest, there are events and projects that will benefit from your talent and support!

### President's Volunteer Service Award

Friends of Plum & Pilot Islands is excited to announce our association with the President's Volunteer Service Award. This program is administered by AmeriCorps and Points of Light. The President's Volunteer Service Award is an opportunity for FOPPI to recognize our most outstanding volunteers. This program is open to individuals of almost all ranges and provides Bronze, Silver, Gold, and Lifetime awards based on the service benchmarks outlined below.

Age Group	Bronze	Silver	Gold	Lifetime Achievement
Teens (age 11-15)	50-74 hours	75-99 hours	100+ hours	4,000+ hours
Young Adults (16-25)	100-174 hours	175-249 hours	250+ hours	4,000+ hours
Adults (age 26+)	100-249 hours	250-499 hours	500+ hours	4,000+ hours

Award winners receive the following:

- The official President's Volunteer Service Award pin, coin, or medallion.
- A personalized certificate of achievement and letter signed by the President of the United States.

Please go to [www.presidentialserviceawards.gov](http://www.presidentialserviceawards.gov) for more information. As the certifying organization, FOPPI will begin this program retroactively on January 1, 2023. All volunteer hours must be submitted to the FOPPI Volunteer Coordinator, Jim Schwartz, at [jrschwartz@new.rr.com](mailto:jrschwartz@new.rr.com).

## Supporting FOPPI

FOPPI is an affiliate of the Wisconsin State Historical Society ([wisconsinhistory.org](http://wisconsinhistory.org)), members of Washington Island Chamber of Commerce ([washingtonisland.com](http://washingtonisland.com)), Door County Historical Society ([doorcountyhistoricalsociety.org](http://doorcountyhistoricalsociety.org)), U.S. Life-Saving Service Heritage Association ([uslife-savingservice.org](http://uslife-savingservice.org)), Door County Visitor Bureau ([doorcounty.com](http://doorcounty.com)), and a partner with Wisconsin Marine Historical Society ([wmhs.org](http://wmhs.org)).

FOPPI thanks its distinguished  
community and business partners!



FOPPI volunteers and USFWS staff on the first Plum Island work day of 2022.

*Never doubt that a small group of thoughtful, committed citizens can change the world; indeed, it's the only thing that ever has.*

*—Margaret Mead*

### Thank you, Donors!

The work done on the Green Bay National Wildlife Refuge is funded in part by the U.S. Fish and Wildlife Service and Friends of Plum & Pilot Islands. The projects and programs we have worked on would not be possible without your financial support. Your donations and inspiration help us to preserve and restore this important part of our heritage within the Green Bay and Gravel Island National Wildlife Refuge. Our gratitude is great.

Amazon Smile  
William & Karen Bell  
Benevity  
Ken Buchholz  
Fidelity Charitable Trust  
Jackson Harbor Soup LLC  
PayPal Giving Fund  
Schubert Family Fund  
Paul Schumacher & Deb Logerquist  
Thrivent Funds  
Donald Whiteman

**Float the Boat:**  
Stiles Meredith  
Gregory Morris  
Phillip & Alison Tatlow

*Alone we can do so little;  
together we can do so much.*

*—Helen Keller*

# Membership Form

*The mission of the Friends of Plum and Pilot Islands is to partner with U.S. Fish and Wildlife Service to support the preservation, restoration, maintenance, and contemporary use of the historic resources on Plum and Pilot Islands, and to conserve and protect wildlife resources, while providing opportunities for quality wildlife-dependent recreation.*

Mail to:

Friends of Plum and Pilot Islands Inc.  
PO Box 61  
Washington Island WI 54246-0061



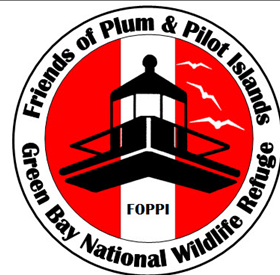
YES, the work of the Friends of Plum and Pilot Islands DOES matter and here is my contribution to support their mission:  
(Please indicate how you would like your donation used.)

- Environmental Education \$ \_\_\_\_\_
- Historic Preservation \$ \_\_\_\_\_
- "Float the Boat" Shoreline Donation \$ \_\_\_\_\_
- Special Events \$ \_\_\_\_\_
- Other Expenses as Needed \$ \_\_\_\_\_
- Gift Membership \$30 \$ \_\_\_\_\_
- TOTAL AMOUNT: \$ \_\_\_\_\_

The Friends of Plum and Pilot Islands is a 501c(3) Charitable Organization. Your gift is tax deductible as provided by law.

Please complete this section for a \$30.00 Gift Membership

Name \_\_\_\_\_  
Address \_\_\_\_\_  
City \_\_\_\_\_  
State/Zip \_\_\_\_\_  
Your Name \_\_\_\_\_  
Occasion \_\_\_\_\_



"Where History and Nature Meet at the Door!"

[www.plumandpilot.org](http://www.plumandpilot.org)

Name \_\_\_\_\_

Address \_\_\_\_\_

City/State/Zip \_\_\_\_\_

Email \_\_\_\_\_

Phone \_\_\_\_\_

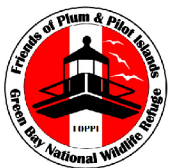
Name as I wish it to appear in your appreciation materials \_\_\_\_\_

Please do not list my name in your materials.

Do you have a connection to the islands? \_\_\_\_\_

**Is it time to renew your membership?**

Mailing label include membership expiration date above your name. If membership has expired, please renew using the form on page 15. Mail it along with your payment to: FOPPI, P.O. Box 61, Washington Island, WI 54246. If you receive the *Forum* electronically, watch for an email that tells you it's time to renew.

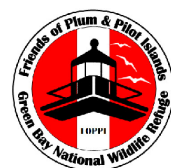


Friends of Plum & Pilot Islands, Inc.  
P.O. Box 61  
Washington Island, WI 54245

**Help Us Be Green!**

To help save paper, printing, and postage expenses, please consider receiving your newsletter via email. Just contact Jean Fox at [jeanfox215@gmail.com](mailto:jeanfox215@gmail.com)

Previous issues of the *Forum* are available on our website to download or read.



The mission of Friends of Plum & Pilot Islands is to partner with U.S. Fish and Wildlife Service to support the preservation, restoration, maintenance, and contemporary use of the historic resources on Plum and Pilot Islands, and to conserve and protect wildlife resources while providing opportunities for quality wildlife-dependent recreation.

**Friends of Plum & Pilot Islands, Inc.**

**President:** Mary Beth Volmer, 2023  
**Vice President:** Mike Repp, 2024  
**Interim Treasurer:** Kimberly Wells, 2023  
**Secretary:** Karen Ellery, 2023

**Board of Directors**

Amanda Danforth, 2023	Chuck Scheckel, 2025
Sally Dery, 2023	Jim Schwartz, 2025
John Sawyer, 2023	Gary Wilson, 2024

**Emeritus Directors**

Mike Brodd	Dan Olson
Lew Clark	Hoyt Purinton
Frank Forkert	Paul Schumacher
Matt Foss	Tim Sweet
Eric Greenfeldt	Gordon Vieth
Jude Kuenn	Patti Zarling
Scott Nelson	

**Volunteer Team Members**

**Fundraising:** Karen Ellery, Mike Repp, Chuck Scheckel, Jim Schwartz, Tim Sweet, Mary Beth Volmer\*  
**Governance:** Gary Wilson\*  
**Historic Preservation & Restoration:** Jude Kuenn, Paul Kuenn, John Sawyer, Chuck Scheckel\*, Tim Sweet, Kimberly Wells  
**Marketing:** Jake Heffernan\*, Colleen Pilat  
**Membership:** Sally Dery,\* Jean Fox, Bob and Sue Griem, Kristin Pitak  
**Merchandising:** Amanda Danforth\*, Sally Dery, Barb Jacobs, Amy Lesnjak, Patti Zarling  
**Newsletter:** Eric Bonow, Sally Dery, Nancy Leisgang\*, Mary Beth Volmer  
**Special Events:** Sally Dery, Kim Krueger, Amy Lesnjak, Tim Sweet, Mary Beth Volmer  
**The Shoreline:** Sally Dery, Stiles Meredith, Colleen Pilat, Mike Repp, Jim Robinson, Jim Schwartz  
**Volunteer Coordinators:** Sally Dery, Bob and Sue Griem, Jim Schwartz\*

*\*Denotes team leader*