

Friends of Plum and Pilot Islands, Inc.

Where History and Nature Meet at the Door!

Founded in 2007

Forum: Spring 2025

In this issue...

Feature Articles

- ✦ CG 40300
- ✦ Ghost Ships Festival and Canoeopia
- ✦ Sister Lighthouses
- ✦ FOPPI Annual Meeting & Picnic
- ✦ National Historic Preservation Act
- ✦ In Memory
- ✦ Cruises on *The Shoreline*
- ✦ Upcoming Events

Volunteers / Supporting FOPPI

- ✦ Help Wanted
- ✦ FOPPI merchandise
- ✦ New members
- ✦ Donors

Membership Form

FOPPI Forum back issues can be found at the Washington Island Archives, WI Marine Historical Society, WI Maritime Museum, Egg Harbor Public Library, Sturgeon Bay Public Library, and the Wisconsin Historical Society Archives.

Hello, Friends and Supporters,

By now you've heard of the massive changes the current administration has made to our federal agencies, including the U.S. Fish and Wildlife Service (USFWS), with which FOPPI is proud to be recognized as a partner. Many refuges across the country lost staff through firings and retirements at a time when they were already short staffed. While larger refuges took the brunt of staffing cuts, the Horicon and Green Bay National Wildlife Refuges were not left unscathed. Our fearless leader, Dave Bolin, made the tough decision to take the retirement offer. Dave has guided us on policy and has been the torch bearer in our journey. We recently learned that our region's Historic Preservation Officer/Archaeologist, James Myster, also decided to take the retirement offer. James has worked closely with us on the restoration and preservation of the historic structures on Plum and Pilot Islands for the past 14 years. These departures will leave a gaping hole in USFWS and FOPPI's foundation.

Looking for the silver lining in all the chaos, we are thankful that a Continuing Resolution was approved (which will hold us over until September) and that Frank Gercz, our USFWS staff member, was rehired for the season.

The National Wildlife Refuge Association, which advocates for USFWS, tells us that there are plans to open all national wildlife refuges to drilling, or even to sell them to the highest bidder. Behind the scenes, congressional committees are already drafting the next budget reconciliation bill. Both the House and Senate passed their budget resolutions before leaving on Easter recess, officially triggering the reconciliation process and clearing the way for fast-tracked legislation without needing 60 votes in the Senate. Committees are racing to finalize the package by Memorial Day.

FOPPI will continue doing what we can with what we have available to us. This season, we have scheduled four volunteer workdays, three exciting educational programs (Niagara Escarpment, Native American Presence on Plum Island, and Birding 101), community events (Door County Festival of Nature and Door County Maritime Museum Lighthouse Passport Days), and outreach events to share information about the work we are doing and why refuges are so important to the American people. I hope that you'll be able to join us! Registration links are included in the newsletter.

Our work to fulfill our mission is only made possible by folks like you who share our passion for historic preservation and nature conservation. We give you our heartfelt thanks!

—Mary Beth

I recently received a call from the current owner of the historic U.S. Coast Guard Motor Lifeboat (MLB) CG 40300 that was stationed at the Plum Island Coast Guard Station. He is an avid collector and asked if Friends of Plum and Pilots Islands would be interested in purchasing her. I had a take a breath first and then tell him that no, as much as we'd like to, sadly, we're unable to. I gave him some other resources to check into, hoping that we could keep her on the Great Lakes.

He sent me a great amount of information that I found quite interesting. He placed her on the National Register of Historic Places on September 27, 2021, in New York, under the provisions of the National Historic Preservation Act of 1966. This was quite a feat, as usually only stationary objects are placed on the Register. Her period of significance is 1940-1979.

National Register of Historic Places Registration

The U.S. Coast Guard MLB CG 40300 is nationally significant under Criterion C for its role in the evolution of twentieth-century marine engineering design as the Coast Guard's first steel, all electric-welded MLB served as the prototype for later steel lifeboat designs. The experimental design of the CG 40300 set the stage for the end of the all-wood lifeboat era and the beginning of the steel MLB era. Designed by naval architect Alfred Hansen, this pioneering vessel was built in 1940 at the Coast Guard Yard in Curtis Bay, Maryland, remained in service for a remarkable 39 years, and continues to serve as a Coast Guard Auxiliary vessel today, though privately owned.



CG 40300.

She was initially numbered 5357 and renumbered to 40300 in 1943 as part of a Coast Guard wartime change of the vessel numbering system. CG 40300 was intended to be the first of a new class of steel MLBs, replacing the then-standard

36-foot T-series wooden motor lifeboats.

CG 40300 is a self-righting and self-bailing steel hull MLB that is 40 feet in overall length (LOA) and 36.5 feet in length at waterline (LWL), 10.5-foot overall beam. She has a 9-foot 8.5-inch beam at waterline, a 3-foot 9-inch draft, a displacement of

25,890 lbs., a 3-inch x 4-inch steel bar keel, a 250-gallon fuel tank, no masts or sails, and a forward steering position. She is radio-equipped and has engine controls in the cockpit.

CG 40300 has electrically welded galvanized steel framing, decks, and superstructure and an electrically welded galvanized steel hull of full displacement design, a type of design that is not intended to plane. Planing boats raise to the top of the water to reduce drag for increased speed, but as a displacement boat, CG 40300 will remain in the water at her static waterline. The boat has six watertight compartments and a longitudinal system of framing. All seams are butt welded; cabin and engine room spaces are cork insulated.

The boat has a single, large self-bailing cockpit amidships, with forward deckhouse holding equipment and the engine and aft (rear) watertight deckhouse known as the survivor's cabin. Locating the survivor's cabin in the aft section reduces trim (running angle) problems that were experienced by previous designs when the compartment is fully loaded. She has a transom stern rather than double-ended bow and stern design.

The steel plating is 0.25 inches thick compared with a more usual 0.125 inches thickness, making the construction extraordinarily heavy. The galvanized steel construction was a major departure from the previous wooden boats. The hull is reinforced with five watertight bulkheads and longitudinal stringers that are much closer together than the normal practice. This is a vessel designed for the most rugged service. CG 40300's physical arrangement was also a departure from the established practice. The helm was moved forward and the survivor's cabin was moved aft. The engine room has been placed under the helm.

As the CG 40300 was the Coast Guard's first steel MLB, there were concerns that the mass of steel would interfere with the magnetic compass. To mitigate this possibility, the area around the helm was built of Evendur™, a non-magnetic silicon bronze metal. The yard displayed great skill in welding steel to bronze, something that would be difficult even with today's technology.

The Coast Guard yard was very experienced in welded steel construction for various parts of ships and boats, such as the bronze-welded pilot house

and the steel engine bed of the wooden 52-foot MLBs built in 1935, but had never built a steel MLB before and as far as is known, had never welded a complete hull of any kind. Nevertheless, they managed to build a welded steel MLB that remained in service for 39 years, longer than any other single-engine MLB in Coast Guard history.



CG 40300 at Plum Island.

After a brief service at several lifeboat stations along the East Coast, the CG 40300 was transferred to the Great Lakes, where she served at the Plum Island Lifesaving Station on Lake Michigan, Wisconsin. She was eagerly greeted there

because her steel hull enabled her to work well in light ice conditions. She became the boat of choice and received rave reviews by many who used her. However, some didn't like the center pilot station that obscured rescue vision and claimed the ride was "strange." Others weren't ready to accept the steel construction and preferred the traditional use of wood.

In addition to rescue work, she carried supplies to the lighthouses on Plum Island and Pilot Island on Lake Michigan. The Plum Island Coast Guard Station was manned from April to December. After that, the boat would be docked at a port on the larger Washington Island of Lake Michigan, with one Coast Guardsman whose primary role was to



CG 40300 breaking ice.

maintain the batteries and lamps of the lighthouses on Plum and Pilot Islands during the winter months. The CG 40300 made this mission possible with its ice-breaking capabilities. In winter, ice was assured on Lake

Michigan and also meant the ferry from Washington Island to the Door Peninsula would need help to make the crossing. To date, no other Coast Guard MLB has ever been authorized to actually break ice; they can only operate in broken ice. When the need arose, however, CG 40300

served as the ice breaker for the ferry route. Sometimes the ice would become too thick for the wooden ferry even after being broken by CG 40300. At those times, if there was an urgent need, CG 40300 became the ferry of last resort. Though the CG 40300 was a one-of-a-kind prototype, her service was typical as a Coast Guard MLB for search and rescue of people and vessels in trouble. Search and rescue missions very often involved going out in dangerously bad weather with rough seas—a task for which the sturdy steel CG 40300 proved well-suited. David Robb, a Coast Guard service member stationed at Plum Island in the mid-1960s recounted one such dangerous mission while serving on the CG 40300. A 40-foot-wide by 90-foot-long barge, heavy laden with a crane, two bulldozers, construction equipment, and 50 barrels oil, came loose from its towboat and was caught in very rough seas with winds gusting 25 to 35 knots. When Robb questioned how a 40-foot, single propeller lifeboat could save a heavy barge, the Chief Boatswain's Mate told him, "Look, sailor, you volunteered for the Coast Guard. No one drafted you. Someone out there needs help and there's no one else to call. We have to go out. We don't have to come back."

Having served for 39 years, much longer service than any of the 36-footer wooden boats, CG 40300 was taken out of service in 1979. Her career consisted of three years of sea trials at various stations on the East Coast, 33 years at Plum Island and the port at Washington Island in the winter, and three years at the Escanaba, Michigan Aids to Navigation Station.



CG 40300 docked at Plum Island.

In 1983, CG 40300 was transferred through the General Services Administration to the Eastern Upper Michigan Transportation Service at Sault Ste. Marie, Michigan, and used as a utility boat and for ice breaking. Even after 39 years of excellent service, she was in exceptionally good condition.

If, just by chance, you'd like CG 40300 to return home, please reach out to FOPPI, and we'll connect you with her current owner.

Ghost Ships Festival and Canoecopia



Tamara Thomsen of Wisconsin Historical Society and Mary Beth Volmer, FOPPI Board President at the Ghost Ships Festival.

Ghost Ships Festival by Sally Dery

The Wisconsin Underwater Archeology Association (WUAA) hosted the Ghost Ships Festival in Manitowoc, Wisconsin, on February 28 and March 1, 2025. This is Wisconsin's premier event for Great Lakes maritime history, underwater archeology, scuba diving, and underwater technology.

FOPPI was pleased to be a part of this festival. Jim Schwartz and I staffed a booth for the two day event to share FOPPI's mission and rich maritime history of Plum and Pilot Islands with folks from across the country, several FOPPI members, and friends from other organizations.



Sally Dery and Jim Schwartz represent FOPPI at the Ghost Ships Festival.

We found it interesting to find that many people were not familiar with Door County, WI. We were delighted to share the story of shipwrecks, lighthouses, unique geography, beauty, and

recreational opportunities Door County has to offer to visitors, as well as promoting our educational programs and cruises aboard *The Shoreline*.

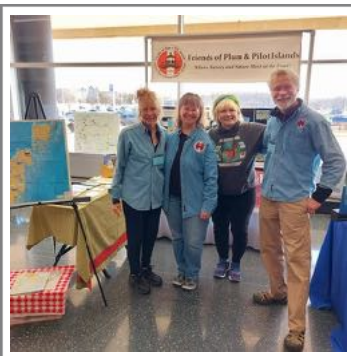
Canoecopia by Jude Kuenn

Canoecopia, held March 7-9, 2025, at the Alliant Center in Madison, Wisconsin, was another successful event for creating awareness and introducing folks to the Friends of Plum and Pilot Islands.

Canoecopia is the largest paddlesports consumer event in the world. With over 100 presentations and clinics, Canoecopia is also an educational event where you can learn about specific gear for your style of paddling, develop skills to get you where you want to go, and discover some of the many places to paddle, both near and far. If you're interested in experiencing life on the water, Canoecopia is the best place to spend the weekend!



FOPPI booth at Canoecopia.



FOPPI volunteers, L-R: Jude Kuenn, Kim Krueger, Patti Zarlino, and Paul Kuenn.

This was FOPPI's fifth year participating, and we had the most interest yet. We had a terrific lobby location across from the lecture rooms on the main floor, and close to the event entrance. We hope to see some FOPPI friends there next year!

To learn more about paddling in Wisconsin, check out these sites:

River Alliance of Wisconsin: Paddle Wisconsin
wisconsinrivers.org/paddlewi/

Wisconsin Department of Natural Resources: Wisconsin Water Trails
dnr.wisconsin.gov/topic/parks/watertrails

Wisconsin Trail Guide: Paddle Trails
wisconsintrailguide.com/paddle/paddle-trails.html

Sister Lighthouses submitted by Mary Beth Volmer

There are five of us that were born from identical blueprints, if you will, and modified over time.

We all had the same original square building to begin with, and then some of us, like Grand Traverse, South Manitou, and Pilot were reconfigured, depending on the needs at the time. Pottawatomie was also built in 1858 but had modifications right from the start. It looks like us, but not quite exactly.

Grand Traverse Light (1852, 1858)
www.grandtraverselighthouse.com/

Green Island Light (1863) The lighthouse has fallen down and not much is left now. It was located on Green Island in Green Bay, WI.
www.lighthousefriends.com/light.asp?ID=632

South Manitou Island Light (1839, 1858; not pictured)
www.sleepingbeardunes.com/things-to-do/lighthouses/south-manitou-light/

Pilot Island Light (1858)
www.plumandpilot.org/pilot-history

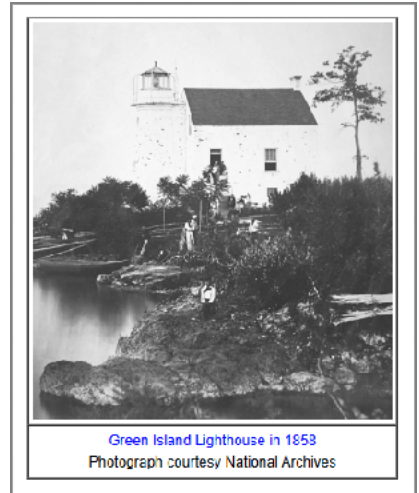
Port Washington Light (1848, 1860)
www.pwhistory.org/

Pottawatomie Light, Rock Island, Wisconsin (1836, 1858)
dnr.wisconsin.gov/topic/parks/rockisland/lighthouse

Photos (unless otherwise noted) and information courtesy of Stef Staley, Executive Director, Grand Traverse Lighthouse Museum.



Grand Traverse Light, Northport, MI.



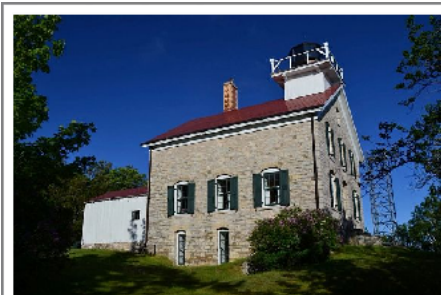
Green Island Light, Green Bay, WI.



Green Island Light, Green Bay, WI.
Photo courtesy of U.S. Coast Guard.



Port Washington Light, Port Washington, WI.
Photo courtesy of Port Washington Historical Society.



Pottawatomie Light, Rock Island, WI. Photo courtesy of Wisconsin Department of Natural Resources.



Pilot Island Light, Lake Michigan, WI.

Lighthouses are endlessly suggestive signifiers of both human isolation and our ultimate connectedness to each other.
—Virginia Woolf

FOPPI Annual Meeting and Picnic

Mark your calendar and plan to attend our annual meeting and picnic on Saturday, July 26, 2025—just one of the many benefits of being a member of the Friends of Plum and Pilot Islands!

Come experience the magic firsthand!

Details

- **Date:** Saturday, July 26, 2025
- **Time:** 9:00am–2:00pm
- **Transportation:** Provided from Gills Rock to Plum Island*
- **Lunch:** Provided by FOPPI—please bring your own nonalcoholic beverage
- **Cost:** FREE for FOPPI members and their guests



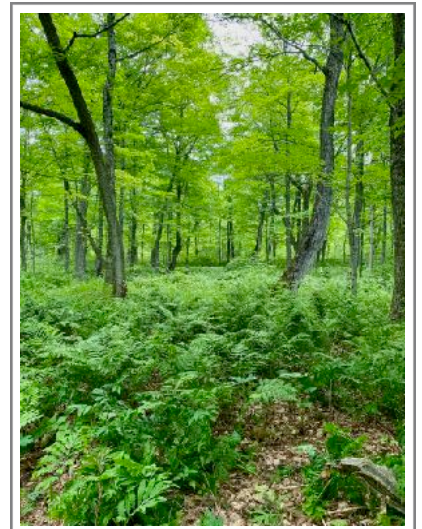
Sign up for this fun event at www.plumandpilot.org/annual-meeting by July 14.

Learn more about the work that FOPPI and the U.S. Fish and Wildlife Service have completed and are planning on the islands.

*In the case of inclement weather, the meeting and lunch will be held at the Community Center Gymnasium on Washington Island. Transportation from Detroit Harbor will be generously provided by Washington Island Cherry Train.



Plum Island is a Leave No Trace site. To learn how you can leave no trace, visit lnt.org/why/7-principles/.



National Historic Preservation Act by U.S. Fish and Wildlife Service

The U.S. Fish and Wildlife Service conserves more than just flora and fauna at America's national wildlife refuges and national fish hatcheries. As mandated under the National Historic Preservation Act, the Fish and Wildlife Service also conserves tens of thousands of archaeological and historic sites, sacred and traditional areas and scientifically-important museum collections that reflect the long and diverse history and traditions of our nation.

What We Do

Through its stewardship of historic properties, the U.S. Fish and Wildlife Service Historic Preservation Program not only complies with federal law, but also engages refuge visitors, deepens their understanding of the nation's past, and builds relationships with local communities.

The program is staffed by historic preservation professionals meeting the Secretary of the Interior's standards who work throughout the country to help manage and conserve cultural resources.

The program's objectives are to:

- Recognize the intrinsic value of the U.S. Fish and Wildlife Service's cultural resources by properly protecting and maintaining them in compliance with historic preservation legislation and Interior Department policy.
- Plan for the potential public and scientific use of U.S. Fish and Wildlife Service-managed cultural resources for the benefit of present and future generations.
- Maintain and preserve unique cultural resources and make them applicable to our ongoing natural resource and wildlife conservation mission.
- Identify, evaluate the importance of, and seek the appropriate protective designation of cultural resources in compliance with existing legal requirements, regulations and professional standards.
- Ensure that when we are conducting activities to meet the U.S. Fish and Wildlife Service's mission and program goals, we do not inadvertently transfer, sell, demolish, or alter our cultural resources until we can adequately identify them, evaluate impacts, and make informed decisions and necessary plans.
- Prevent or avoid damage and deterioration to cultural resources that result from erosion, abandonment, lack of maintenance, and neglect.
- Encourage and enhance educational, interpretive and research opportunities for U.S. Fish and Wildlife Service cultural resources consistent with overall Fish and Wildlife Service management objectives.
- Ensure employees recognize the importance of cultural resources to habitat and land management issues and safeguard them so that the U.S. Fish and Wildlife Service can maximize opportunities to enhance the public's knowledge and understanding of the environmental and cultural contexts of conservation.
- Protect and manage cultural resources that are important for maintaining the traditional culture of Native American tribes, Native Hawaiian people, Alaska Native people and other traditional communities.

Take the "Name that Refuge Culture & History Quiz":
www.youtube.com/live/qDZWQ7gYLkk?si=cNCqzx8s-btqDkBj

For more information, visit:

www.fws.gov/

www.fws.gov/program/historic-preservation/what-we-do

www.fws.gov/program/historic-preservation/news



In Memory submitted by Tim Sweet

The Friends of Plum and Pilot Islands remember Frank Forkert, a former FOPPI board member, and Jay Ward, an attorney who provided pro bono services in order for FOPPI to be incorporated. We are grateful for the support and service they provided, and we extend our sympathies to their families and friends.

Franklyn Forkert



Franklyn Rodger Forkert, age 96 of Sister Bay, passed away peacefully on April 7, 2025.

He was born in Chicago, IL to Otto Maurice Forkert and Ella Wheeler (Smith) Forkert.

Frank traveled the world extensively. He loved the water and was an

accomplished sailor. After retiring from Running Anchor Marine in Sister Bay, Frank and his wife Jan spent summers cruising on Puget Sound and volunteering for the Door County Maritime Museum.

Frank is survived by two sons, Russell and Gordon; daughter, Julie; grandson, Sam; and great grandson, Mack.

He was preceded in death by two wives, Nancy and Janie; and a son, Rodger.

Frank's final wishes were not to have any formal services.

Casperson Funeral Home of Sister Bay is assisting the Forkert family. Expressions of sympathy, memories, and photos of Frank may be shared with his family through his tribute page at www.CaspersonFuneralHome.com.

John Arthur "Jay" Ward

John Arthur "Jay" Ward, III, 85, passed away peacefully on March 21, 2025 in Barrington, Illinois surrounded by family.

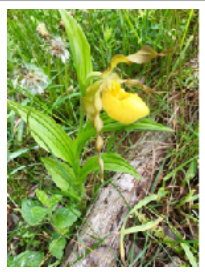
Born in Riverside, Illinois on February 4, 1940 to Charlotte Noble Ward and John A. Ward, Jr., Jay married Elizabeth Howe ("Betsy") on September 7, 1963, and celebrated 61 years of marriage in September 2024.

Jay and Betsy settled in Barrington Hills, Illinois, and raised three children: Brooke, John, and Michael.

Jay was preceded in death by his son, John Arthur Ward, IV. Jay is survived by his wife, Betsy; his sister Linda Fiske (Gary), his daughter, Brooke Raymond (Patrick); and his son, Michael (Erica), and five grandchildren: Eliot, Owen, Grace, Michael "MJ", and John "Jack."

Memorial services will be held at St. Michael's Episcopal Church, Barrington, Illinois, at 1:00 p.m. on Saturday, April 26th and on July 5th, on Washington Island, Wisconsin, at a time and place to be announced.

Memorial gifts may be made to the Trueblood Performing Arts Center on Washington Island, or to the Amherst Fund at Amherst College.



The Lady Slipper by Mary Beth Volmer

An Ojibwe legend tells of the great courage of a girl who saves her people from illness. The girl knows she must journey to the next village to get the healing herb, mash-ki-ki, for her people, who have all fallen ill. After lining her moccasins with rabbit fur, she braves a raging snowstorm and crosses a dark frozen lake to reach the village. Then, rather than wait for morning, she sets out for home while the villagers sleep, determined to help her people. During her trek through the snow, she loses her moccasins and her bare feet are cut by icy shards, and bleed with every step until she reaches her home. The next spring beautiful lady slippers bloom from the place where her moccasins were lost, and from every spot her injured feet touched. This is the story of how the Lady Slipper came to be.

Cruise on *The Shoreline*

CRUISE ON *THE SHORELINE*!

Are you ready for a unique Door County adventure?

Nor'Door Cruises by *The Shoreline* offers our premier **Death's Door Lighthouse Cruise with a stop on Plum Island**. See the remote Pilot Island Lighthouse and Plum Island Range Lights. Docents tell the tales of the area shipwrecks and share stories about the lighthouse keepers and coasties who were stationed on the islands. You'll also learn about the islands' natural history and the work the Friends of Plum and Pilot Islands are doing to preserve this history.



We also offer cruises to these destinations:

- Rock Island State Park** cruise to lovely Rock Island, home of the Pottawatomie Lighthouse, with time to hike, picnic, or swim before your return cruise.
- Fayette State Park** in Upper Michigan's Garden Peninsula. Bring a picnic lunch, explore preserved sites in this mining-settlement-turned-ghost-town, hike the trails and enjoy the outstanding views.
- Out-Island** cruise to see Boyers Bluff Light Tower on Washington Island, Pottawatomie Lighthouse on Rock Island, and St. Martin Island and Poverty Island Lighthouses. This is a water-only tour—be sure to pack a lunch!

Contact us if you'd like to create your own cruise to best fit your interests.

The Shoreline can comfortably accommodate 14 guests. And, we're dog friendly!

All cruises depart from Gills Rock at The Shoreline Resort Marina. For charter rates and more information, visit www.plumandpilot.org/the-shoreline.html.



Tours are provided by the Friends of Plum and Pilot Islands to support preservation and restoration of the historic maritime structures on these islands.



If you have already enjoyed a cruise on *The Shoreline*, we would love to hear from you! Please share your experience and your photos with us at friendsofplumandpilot@gmail.com.

Upcoming Events

Save the date(s) now, and plan to attend one (or more) of these great events!



Photo by Dave Heilman.

June 9, Monday: Summer Photography Workshop

Famed Door County photographer [Dave Heilman](#) once again will be sharing his craft with us during two photography workshops on Plum Island.

Dave believes that “You are not photographing your subject; you are photographing how light falls upon your subject.” Dave will guide us in meeting that light, whether you are a cell-phone, SLR, or time-honored film photographer. No experience is necessary; Plum Island and its natural beauty and historic buildings will provide the inspiration. Transportation from Gills Rock provided aboard *The Shoreline*. Go to www.plumandpilot.org/photoworkshop to register.

June 21: Niagara Escarpment Field Day

Join Don Mikulic, with the Niagara Escarpment Resource Network (NERN), to learn about the natural, cultural, historical and environmental features of the escarpment. After the presentation, take a hike to see where the escarpment is present on Plum Island and learn about the plants that are dependent on this rare geologic formation. Transportation from Gills Rock provided aboard *The Shoreline*. Click www.plumandpilot.org/niagara to register!

July 4: Boat Regatta

Join FOPPI during the annual July 4 boat regatta in Gills Rock and view the fireworks display aboard *The Shoreline*. Visit www.plumandpilot.org/events-work-days to register!

July 26: FOPPI Annual Meeting and Picnic

Catch up with (or meet for the first time!) some of your FOPPI friends, learn more about our upcoming plans, and explore Plum Island! See page 4 of this issue or click www.plumandpilot.org/annual-meeting to register by July 14.

July 27: Native American Presence on Plum Island Field Day

Former U.S. Fish and Wildlife Service Regional Historic Preservation Officer and Archaeologist James Myster will share his knowledge of the customs, traditions, and ways of life of the indigenous peoples in the native tribes in northern Door County. Transportation from Gills Rock provided aboard *The Shoreline*. Go to www.plumandpilot.org/nativeamerican to register.

August 9: Native Plant Sale / Fundraiser

FOPPI is once again excited to partner with Stone Silo Prairie Gardens in DePere, WI, to host a sale of native perennials and grasses. FOPPI volunteers and Stone Silo experts will be on hand to help you select the perfect native plants for your garden. Visit www.stonesiloprairie.com for more information.

September 13: Fall Photography Workshop (See description for Summer Photography workshop!)

September 13: Butterfly Cruise

You'll learn about the monarch butterfly, their migration, and what we can do to protect these fragile creatures. You will have a chance to net the butterflies, apply a monitoring tag to them, and trace their migration south to aid scientists in studying their population and migration patterns. Transportation from Gills Rock provided aboard *The Shoreline*. Click www.plumandpilot.org/butterfly to register!

For more events, including FOPPI volunteer workdays and Door County Maritime Museum's Lighthouse Passport Days, visit www.plumandpilot.org/events-work-days.



Stone Silo Prairie Gardens owner, Justin Kroening, and FOPPI volunteer Jude Kuenn.

HELP WANTED: FOPPI Volunteers

HELP WANTED (and NEEDED!)

Have fun while learning, making new friends, and sharing your love of Door County

Crew for *The Shoreline*

The Friends of Plum and Pilot Islands owns and operates the 17-passenger tour boat *The Shoreline* out of Gills Rock. The profits from the operation of *The Shoreline* directly support the preservation of the historic maritime structures on Plum and Pilot Islands.

We need several volunteer crew members for *The Shoreline*. We are looking for anyone who loves being on the water, and **we will train you!** Duties include assisting with docking and departing, answering guests' questions, doing light cleanup of the boat, and understanding and conveying safety procedures. There are no set hours. As cruises are booked, you will be asked if you are available for that cruise. Advance notice of a cruise might be as short as a day or two or as long as several weeks. As a volunteer on a Coast Guard-regulated boat, you will be required to have a drug test.



Crew aboard *The Shoreline*, 2023.

Start where you are. Use what you have. Do what you can.
—Arthur Ashe

Marketing Guru

We are looking for someone to work on our marketing team. In this role you would:

- Write and update social media content on Facebook, Instagram, Twitter, LinkedIn, and BlueSky
- Assist with updates to the Friends of Plum and Pilot Islands website
- Write press releases to promote FOPPI's mission, projects, and events
- Learn about the importance of historical preservation and restoration
- Work alongside some of the most dedicated and passionate volunteers on the planet
- Walk among the spirits and preserve the history of those who served on the islands with the U.S. Life Saving Service and Coast Guard

Membership Assistant

We are looking for someone to assist our membership team leader. In this role you would:

- Record new memberships
- Follow up on renewals
- Update our mass mailing program (MailChimp)
- Launch new membership campaigns
- Report membership numbers to board members
- Learn about the importance of historical preservation and restoration
- Work alongside some of the most dedicated and passionate volunteers on the planet
- Walk among the spirits and preserve the history of those who served on the islands with the U.S. Life Saving Service and Coast Guard

The Marketing Guru and Membership Assistant are virtual volunteer positions. Perks include behind-the-scenes tours of the Green Bay and Horicon National Wildlife Refuges along with the opportunity to represent FOPPI in community outreach events, programs and projects.

Please reach out to us with your interest or questions at friendsofplumandpilot@gmail.com. Thank you for your consideration!

Supporting FOPPI

Tax-Free Qualified Charitable Distributions (QCDs) can benefit you and Friends of Plum and Pilot Islands' work.

Qualified Charitable Distributions (QCDs), also called IRA charitable distributions, enable individuals to fulfill their required minimum distribution by a direct transfer to support a charity/charities, as long as the sum of the distributions is within the \$100,000 limit. And because QCDs don't increase taxable income, they can help you avoid higher tax rates. You can use this strategy if:

- You are 70½ or older at the time of the gift.
- You direct distributions in the amount of your choosing, up to an annual limit set by the IRS from your traditional or Roth IRA to Friends of Plum and Pilot Islands (other types of retirement plans are not covered by the law).
- To count for the current tax year, QCDs distribution must be made before December 31.
-

Contact your IRA custodian and ask them to send the check for a "qualified charitable distribution" to: Friends of Plum and Pilot Islands, EIN 74-3226051.

Is your organization or nonprofit hosting a community event? Let us know if you would like FOPPI to come share our story! Email us as friendsofplumandpilot@gmail.com, and we will arrange for one (or more!) of our knowledgeable and passionate volunteers to attend your event.

Looking for a memorable birthday, graduation, or "just because" gift?



Click over to our store at www.plumandpilot.org/store to find a variety of other fun FOPPI gifts for friends and family:

- Candle
- Tee shirts and hoodies
- Plum Island prints and cards
- Pottery mugs, pint glasses, and wine glasses
- And so much more!



Give the gift that gives back to future generations!



CORFA: Coalition of Refuge Friends and Advocates

The mission of the Coalition of Refuge Friends and Advocates (CORFA) is to foster a network of nonprofit organizations that support each other, the National Wildlife Refuge System, and the National Fish Hatchery System. To learn more, visit coalitionofrefugefriends.com.

To order Refuge Strong merch, visit www.bonfire.com/store/corfa.



Friends of Plum and Pilot Islands welcomes these new members:

- ♦ Robert Bartlett, Madison, WI
- ♦ Tiffany Highstrom, Watertown, WI
- ♦ *Lifetime Membership:*
Joe and Barbara Vass, Kenosha, WI

To view FOPPI's financial records, scan the QR code below.



Follow FOPPI on social media!
Download our audio tours at
www.plumandpilot.org/audio-tour.

Friends of Plum and Pilot Islands, Inc. (FOPPI) was established in 2007 to preserve the unique island ecosystems and foster partnerships to preserve their heritage for future generations.

Your membership dues and charitable gifts help to restore and preserve the historical maritime structures on these island and support education in the areas of conservation, natural history, and environmental protection.

Members who receive our quarterly newsletter, *FOPPI Forum*, are invited to attend the annual meeting and to join us seasonal cleanup, trail maintenance, invasive species removal, and light repair work.

Whatever your interest, there are events and projects that will benefit from your talent and support! Visit www.plumandpilot.org/foppi-volunteer to learn more.

President's Volunteer Service Award

Friends of Plum and Pilot Islands is excited to announce our association with the President's Volunteer Service Award. This program is administered by AmeriCorps and Points of Light. The President's Volunteer Service Award is an opportunity for FOPPI to recognize our most outstanding volunteers. This program is open to individuals of almost all ranges and provides Bronze, Silver, Gold, and Lifetime awards based on the service benchmarks outlined below.

Age Group	Bronze	Silver	Gold	Lifetime Achievement
Teens (age 11-15)	50-74 hours	75-99 hours	100+ hours	4,000+ hours
Young Adults (16-25)	100-174 hours	175-249 hours	250+ hours	4,000+ hours
Adults (age 26+)	100-249 hours	250-499 hours	500+ hours	4,000+ hours

Award winners receive the following:

- The official President's Volunteer Service Award pin, coin, or medallion.
- A personalized certificate of achievement and letter signed by the President of the United States.

Please go to presidentalserviceawards.gov for more information. As the certifying organization, FOPPI began this program retroactively on January 1, 2023. All volunteer hours must be submitted to the FOPPI Volunteer Coordinator, Jim Schwartz, at jrschwartz@new.rr.com.

Supporting FOPPI

FOPPI is an affiliate of the Wisconsin State Historical Society (wisconsinhistory.org), members of Washington Island Chamber of Commerce (washingtonisland.com), Door County Historical Society (doorcountyhistoricalsociety.org), U.S. Life-Saving Service Heritage Association (uslife-savingservice.org), Door County Visitor Bureau (doorcounty.com), and a partner with Wisconsin Marine Historical Society (wmhs.org).

**FOPPI thanks its distinguished
community and business associates!**



Leaving on a calm day, with Plum Island in the distance. Photo by Nancy Hoefs Leisgang.

Do your little bit of good where you are; it's those little bits of good put together that overwhelm the world. —Desmond Tutu

Thank you, Donors!

The work done on the Green Bay National Wildlife Refuge is funded in part by the U.S. Fish and Wildlife Service and the Friends of Plum and Pilot Islands. The projects and programs we have worked on would not be possible without your financial support. Your donations and inspiration help us to preserve and restore this important part of our heritage within the Green Bay and Gravel Island National Wildlife Refuge. Our gratitude is great.

Inge Bacon
Laurel Braatz
Dana and Elaine Hilmer
Karen A. Case Revocable Living Trust
Orv and Dee Langohr
Michael A. LeClair
Charles H. Mitchell
Glen Paul Schubert
Paul Schumacher and Deb Logerquist
Dan Sheehy
Thrivent

*Our fingerprints don't fade from the lives
we touch.*

—Judy Blume

Thanks to Jeff Heal of Washington Island for assisting with FOPPI's mail pickup!

Membership Form



FOPPI Membership/Donation Form

Name _____
Address _____
City/State/Zip _____
Email _____
Phone _____
Name as I wish it to appear in your appreciation materials _____
☐ Please do not list my name in your materials.
Do you have a connection to the islands? _____

Where History and Nature Meet at the Door!

Please choose a Membership to join us in our mission to preserve and protect Plum and Pilot Islands!

- ☐ \$30 Individual
☐ \$50 Family - 2 or more family members
☐ \$75 Patron
☐ \$100 Keeper
☐ \$1000 Lifetime

****Gift Memberships are available as well! Please use the below section to mark this membership as a gift.**

☐ Gift Membership for:

Name: _____

Address: _____

City/State/Zip: _____

Phone: _____

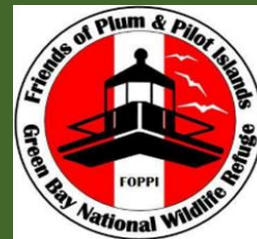
Email: _____

If you would like to donate to a certain FOPPI cause, please let us know by filling out the section below. Thank you!

Your support is critical to the Friends of Plum and Pilot Islands (FOPPI). Restoration and preservation of these beautiful WI islands and their buildings takes a group like FOPPI to make it happen. **Fun Fact:** Plum Island is home to the only Duluth-style Life Saving Station on the Great Lakes!

- ☐ Environmental Education \$ _____
☐ Historic Preservation \$ _____
☐ "Float the Boat" Shoreline Donation \$ _____
☐ Special Events \$ _____
☐ Other Expenses as Needed \$ _____
☐ Gift Membership \$30 \$ _____
☐ TOTAL AMOUNT: \$ _____

The Friends of Plum and Pilot Islands is a 501(c)(3) Charitable Organization. Your gift is tax deductible as provided by law.



FOPPI Members receive:

- ❖ The FOPPI Forum Newsletter
- ❖ An invitation to the FOPPI Annual Meeting
- ❖ 10% off in-person merchandise sales
- ❖ Opportunities to volunteer on the wildlife refuge!

MAIL TO:

FRIENDS OF PLUM & PILOT ISLANDS

PO Box 61
Washington Island, WI
54246

OR GO ONLINE TO:

www.plumandpilot.org/membership

[ip](http://www.plumandpilot.org/membership)

We also have a QR code!



Friends of Plum & Pilot Islands/Membership

Is it time to renew your membership?

Mailing label includes membership expiration date above your name. If membership has expired, please renew using the form on page 15. Mail it along with your payment to: FOPPI, P.O. Box 61, Washington Island, WI 54246. If you receive the *Forum* electronically, watch for an email that tells you it's time to renew. For membership questions call Mary Beth Volmer: (262) 613-4680.



Friends of Plum and Pilot Islands, Inc.
P.O. Box 61
Washington Island, WI 54246

Help Us Be Green!

To help save paper, printing, and postage expenses, please consider receiving your newsletter via email. Just contact Laura Chappell at coastiegals1@yahoo.com.

Previous issues of the *Forum* are available on our website to download or read.



The mission of Friends of Plum and Pilot Islands is to partner with U.S. Fish and Wildlife Service to support the preservation, restoration, maintenance, and contemporary use of the historic resources on Plum and Pilot Islands, and to conserve and protect wildlife resources while providing opportunities for quality wildlife-dependent recreation.

Friends of Plum and Pilot Islands, Inc.

President: Mary Beth Volmer, 2026

Vice President/*The Shoreline* Director:
Open

Treasurer: Kimberly Wells, 2026

Secretary: Karen Ellery, 2026

Board of Directors

Historic Preservation & Restoration:
Chuck Scheckel, 2025

Membership: Laura Chappell, 2026

Merchandising: Sally Dery, 2026

Volunteer Coordinator: Jim Schwartz, 2025

Emeritus Directors

Mike Brodd

Lew Clarke

Eric Greenfeldt

Paul Schumacher

Tim Sweet

Gary Wilson

Volunteer Team Members

Environmental Education: Ginnie Harney*, Sue Scheckel

Fundraising: Karen Ellery*, Chuck Scheckel, Jim Schwartz, Tim Sweet, Mary Beth Volmer

Governance: Open

Historic Preservation & Restoration: Jude Kuenn, Paul Kuenn, Chuck Scheckel*, Tim Sweet, Kimberly Wells

Marketing: Jake Heffernan*, Colleen Pilat

Membership: Laura Chappell*, Bob and Sue Griem, Cheryl Lenz

Merchandising: Sally Dery*, Patti Zarling

Newsletter: Nancy Hoefs Leisgang*, Sally Dery, Tim Sweet, Mary Beth Volmer

Special Events: Sally Dery, Mary Beth Volmer

***The Shoreline*:** Jason Alberston, Sally Dery, Ginnie Harney, Barb Jacobs, Nancy Hoefs Leisgang, Pete LeMere, Deb Meredith, Stiles Meredith*, Dawn Nelson, Scott Nelson, Mike Repp, Jim Robinson, Doug Smith, Jon Wall, Ben Young

Volunteer Coordinators: Sally Dery, Bob and Sue Griem, Jim Schwartz*

**Denotes team leader*